

ANDRE *Stead.*



Screen Printing Catalogue





## Introduction

My artistic journey has always been deeply rooted in sculpture - a medium through which I explore form, space, and the human experience. Over the years, my sculptures have been the primary way I express my creative vision, bringing to life the ideas and concepts that drive my work. However, alongside my sculptural practice, I have also engaged in painting, often as a personal exploration of colour and composition, though this aspect of my work has remained largely private.

Screen printing, however, represents a new and exciting departure for me, one that complements rather than replaces my sculptural work. This collection of screen prints is born out of a desire to make my art more accessible to a broader audience. While sculptures, with their inherent material and production costs, are often seen as exclusive pieces, screen printing offers a more approachable way for people to engage with and own my work.

I have always had a deep affection for the screen printing process. It's a craft I first encountered during my time in art school, and one that I revisited during my early career as a layout artist at a screen printing company. There, I developed a profound appreciation for the medium's ability to balance precision with creative freedom. Screen printing allows me to explore new ideas and revisit familiar themes in a format that is both affordable and versatile, making it possible for more people to bring a piece of art into their homes.

These screen prints are not just another creative experiment; they are a meaningful extension of my sculptural work. They offer a new way to experience the concepts I explore in my sculptures, distilled into bold, vibrant forms that are easy to live with and display. This collection is my way of sharing my art with a wider audience, making it possible for those who connect with my work to own a piece that is both special and accessible.



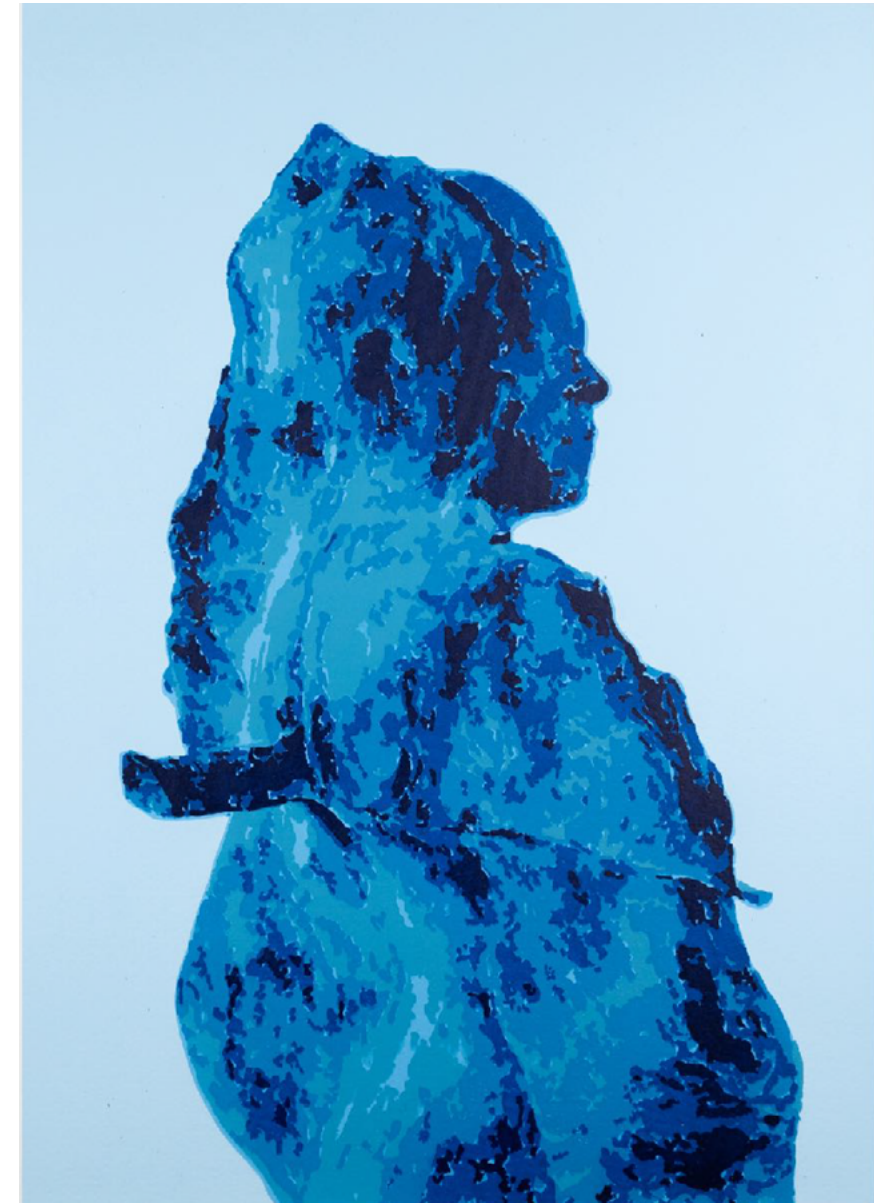


### **African Icon**

2024, Screen Print, Edition of 12, Size: 46 x 32,4 cm

"African Icon" reimagines a classic form through the lens of vibrant contemporary screen printing. This work draws direct inspiration from my sculptural piece of the same name, delving into the primordial essence of human identity and cultural heritage. The figure depicted is reminiscent of ancient fertility figures, capturing the enduring beauty and strength inherent in the female form.

The use of bold, contrasting colours against a minimalist background serves to both isolate and exalt the figure, placing it in a timeless, almost ethereal context. The vivid hues and clean lines juxtapose the ancient and the modern, highlighting the continuity and evolution of cultural symbols across time. The figure stands as a representation of both personal and collective history, embodying a connection to ancestry and the enduring spirit of humanity.



### **Die-cast Love**

2024, Screen Print, Edition of 12, Size: 46 x 32,5 cm

*"Die-cast Love" explores the interplay between industrial materiality and human emotion, capturing a moment where the mechanical meets the deeply personal. The silhouette is both robust and ethereal, echoing the permanence of cast metal while hinting at the vulnerability inherent in love.*

*Layered shades of blue suggest a cold, metallic surface, yet the figure's gentle contours imply warmth and intimacy. This duality reflects the complex nature of love itself—strong and enduring, yet fragile in its need for connection and understanding. The title "Die-cast Love" evokes both the precision and finality of industrial processes and the unpredictable, fluid nature of human relationships.*





### **Emergence of Man**

*2024, Screen Print, Edition of 12, Size: 44,2 x 32,4 cm*

"Emergence of Man" offers a striking commentary on the duality of human nature and the complexities of power and identity. This print juxtaposes symbols of authority, mortality, and the human condition, inviting reflection on the broader implications of humanity's evolution.

At the centre of the composition is a skull crowned with religious and royal iconography, symbolising the intersection of life, death, and power. Surrounding this central motif are silhouettes of human figures in various states of action and repose, rendered in deep blues against a soft blue background. These figures represent the diverse facets of human existence, from the spiritual to the physical, from domination to vulnerability.



### **Genesis**

*2024, Screen Print, Edition of 12, Size: 46 x 32,5 cm*

"Genesis" explores the origins of existence through the interplay of form and abstraction. This screen print presents a skeletal figure rendered in a striking golden hue, set against a textured, deep blue background that suggests the vastness of the cosmos or the complexity of urban landscapes. The skeletal form, reminiscent of both the anatomical and the architectural, evokes themes of creation, structure, and the fundamental frameworks that underpin life itself.



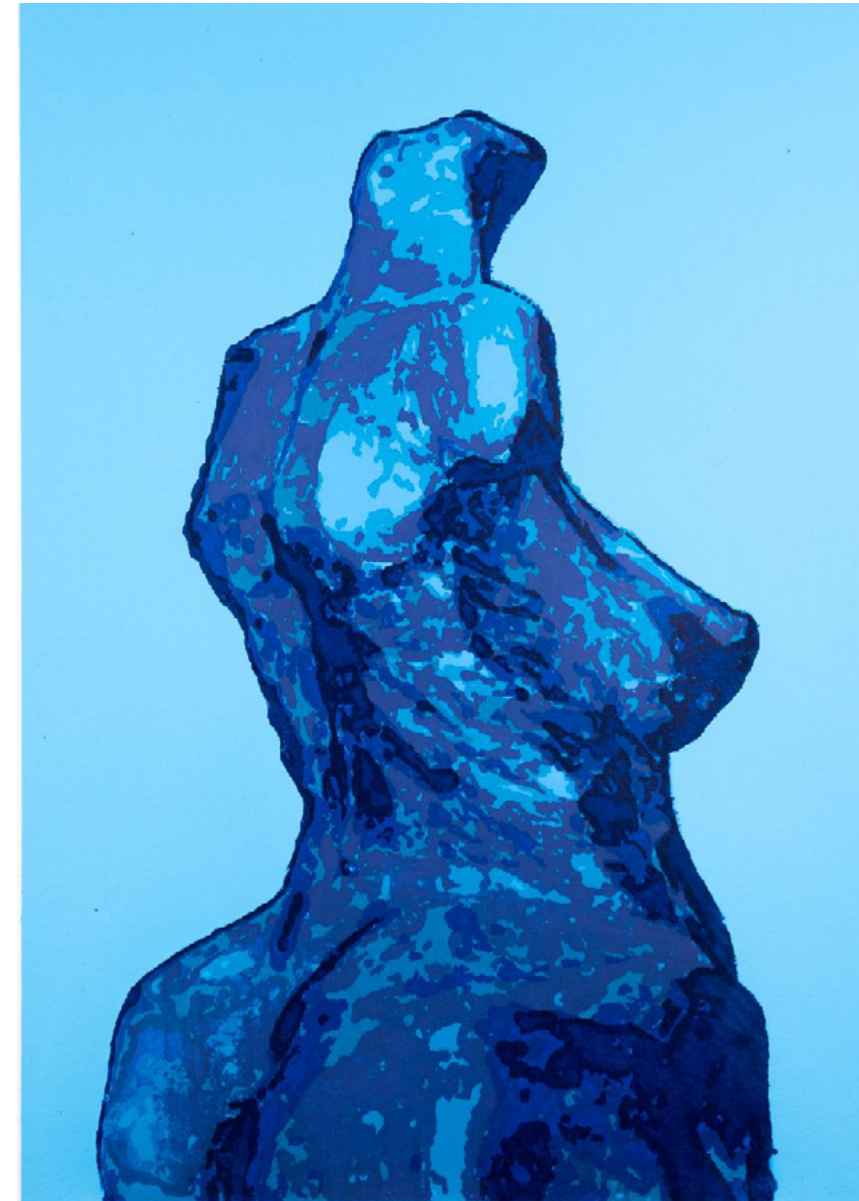


**Girl in Blue**

2024, Screen Print, Edition of 12, Size: 45,5 x 36,4 cm

*"Girl in Blue" captures a moment of introspection, where the subject seems enveloped in a quiet, contemplative mood. Rendered in varying shades of blue, the image is both haunting and serene, inviting the viewer to delve into the emotional landscape portrayed.*

*The soft, ethereal quality of the print, combined with subtle texturing and layering of colours, evokes a dreamlike atmosphere. The subject, while clearly present, also seems to be on the verge of fading into the background, reflecting the transient nature of memory and emotion.*



**Icon**

2024, Screen Print, Edition of 12, Size: 46 x 32,5 cm

*"Icon" is a powerful exploration of form, presence, and the symbolic resonance of the human figure. This screen print depicts a stylised, abstracted figure rendered in deep, layered blues, standing against a serene background that enhances the figure's monumental and timeless quality.*

*The simplicity of the composition, with its focus on the solitary figure, draws attention to the contours and textures, allowing the viewer to engage with the piece on both a visual and emotional level.*

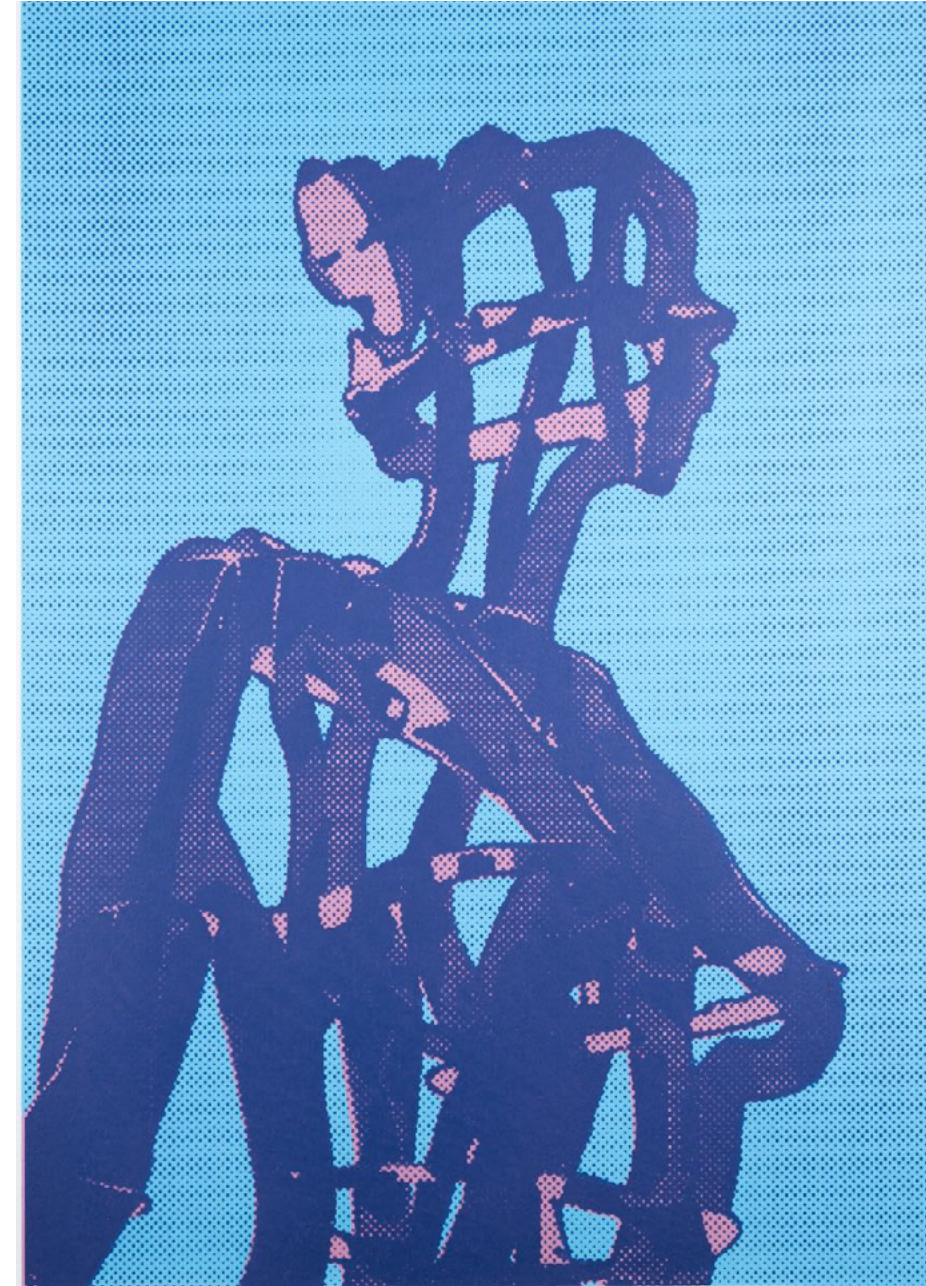




### **Girl in Red**

2024, Screen Print, Edition of 12, Size: 45,5 x 36,4 cm

*"Girl in Red" contrasts the introspective serenity of "Girl in Blue" with a more vibrant and dynamic representation. The striking red tones invoke a sense of passion, energy, and movement, capturing a moment of intense emotion. The bold colour palette and confident lines emphasise the strength and vitality of the subject, making this piece a powerful statement about the interplay of emotion and expression.*



### **Missus Matrix**

2024, Screen Print, Edition of 12, Size: 46 x 32,5 cm

*"Missus Matrix" explores the intricate connections between identity, technology, and femininity. The composition, rendered in sharp lines and layered hues, presents a figure that seems to emerge from the digital ether—a modern-day deity navigating the complexities of the contemporary world. This piece reflects the tension between the organic and the synthetic, offering a commentary on the evolving nature of human identity in the digital age.*





#### Framing and Mounting of the Screen Prints

Each screen print is carefully framed and mounted to enhance its aesthetic appeal and longevity. The prints are made on acid-free, archival-quality paper, ensuring their preservation over time. The custom-made frames are crafted from sustainably sourced wood (Kiaat) and finished in a neutral tone that complements the artwork without distraction.

The artwork is carefully cropped, allowing a 7 cm margin around the printed image, ensuring that the composition remains the focal point while being surrounded by ample white space. The frame's outer dimensions are 61.4 cm x 48 cm with a depth of 3.5 cm, providing a robust yet refined border that complements the artwork's vibrant colours.

#### The Significance of Gouache Paintings

This screen print series originated from a collection of gouache paintings that laid the groundwork for the final designs. Gouache, with its vibrant opacity, allowed for spontaneous exploration of colours, shapes, and textures, forming the creative blueprint for the prints.

These paintings are not merely preparatory studies but integral to the artistic process, capturing the raw energy and initial ideas that were refined into the final screen prints. Together, the gouache works and prints represent a cohesive journey, showcasing the evolution of each piece from concept to completion.









[www.andresteadsculpture.com](http://www.andresteadsculpture.com)